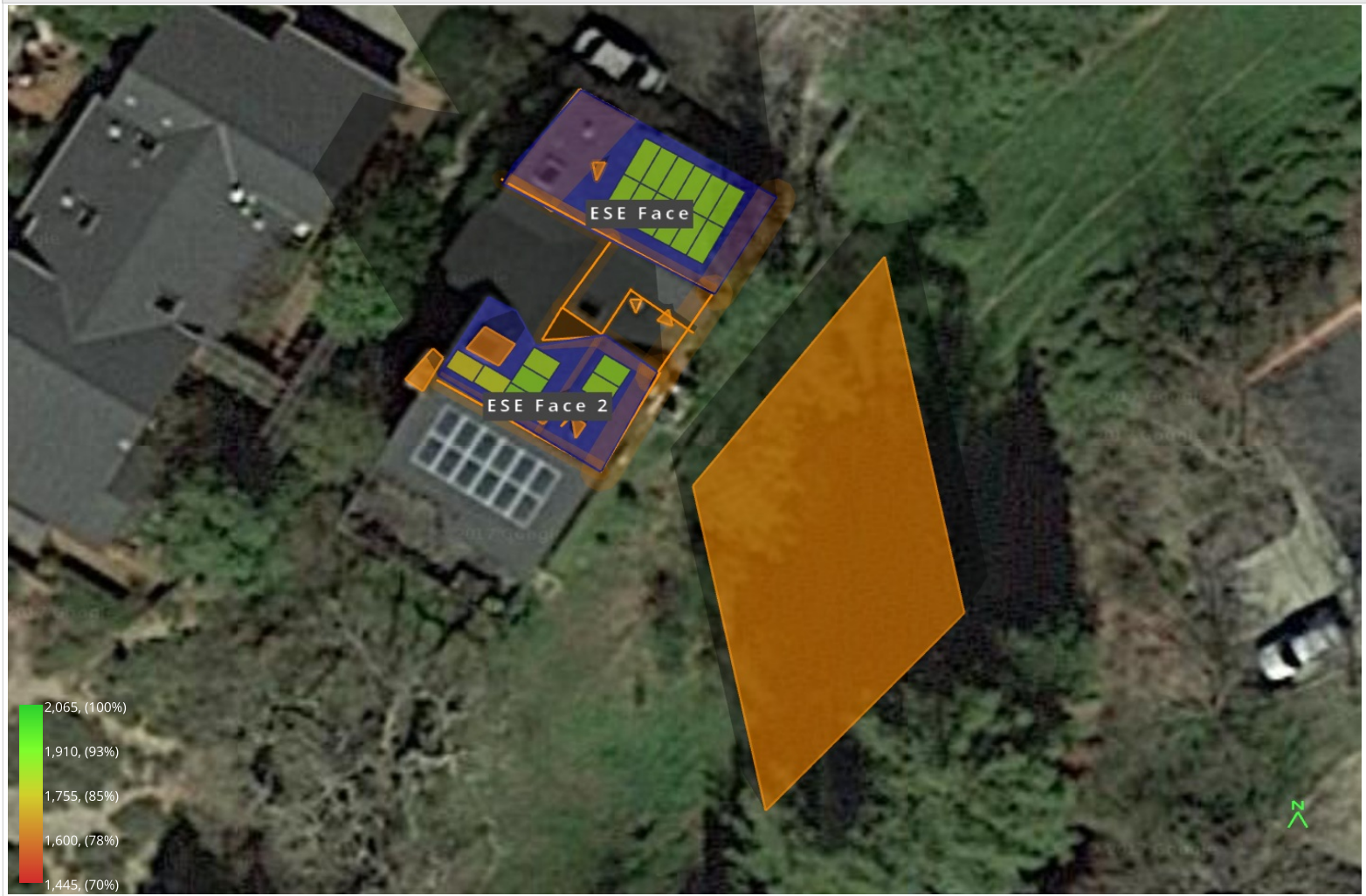


Sean White Residence Orinda, CA Sean White, 340 Village View Court

Shading Heatmap



Shading by Field Segment

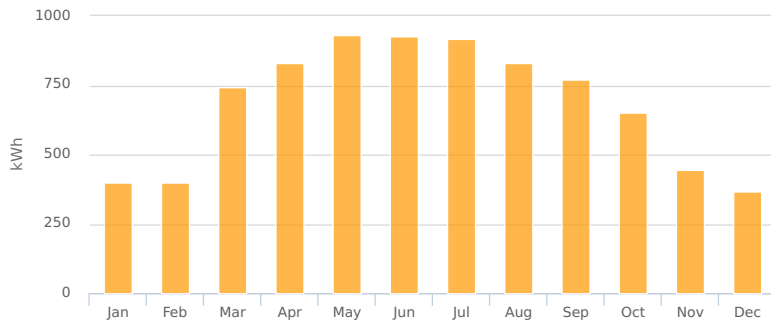
Description	Tilt	Azimuth	Modules	Nameplate	Shaded Irradiance	AC Energy	TOF ²	Solar Access	TSRF ²
ESE Face	30.0°	119.0°	12	3.66 kWp	1,838.2kWh/m ²	5.40 MWh ¹	89.1%	99.9%	89.0%
ESE Face 2	30.0°	122.0°	7	1.96 kWp	1,815.1kWh/m ²	2.81 MWh ¹	90.0%	97.7%	87.9%
Totals, weighted by kWp			19	5.62 kWp	1,830.1kWh/m ²	8.20 MWh	89.4%	99.1%	88.6%

¹ approximate, varies based on inverter performance
² based on location Optimal POA Irradiance of 2,065.0kWh/m² at 32.3° tilt and 185.4° azimuth

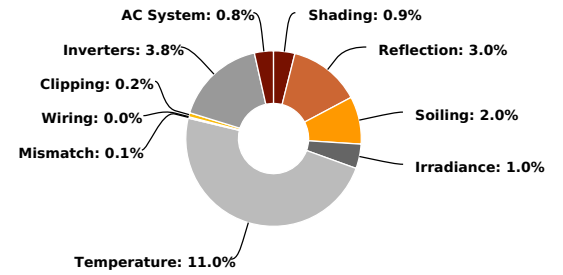
Solar Access by Month

Description	jan	feb	mar	apr	may	jun	jul	aug	sep	oct	nov	dec
ESE Face	100%	100%	100%	100%	100%	100%	100%	100%	100%	100%	100%	100%
ESE Face 2	99%	100%	99%	98%	96%	95%	96%	98%	98%	99%	99%	99%
Solar Access, weighted by kWp	99.7%	99.9%	99.6%	99.2%	98.6%	98.3%	98.5%	99.0%	99.4%	99.6%	99.6%	99.7%
AC Power (kWh)	397.2	398.0	742.6	828.0	929.7	927.2	917.4	832.1	769.2	651.6	445.0	366.7

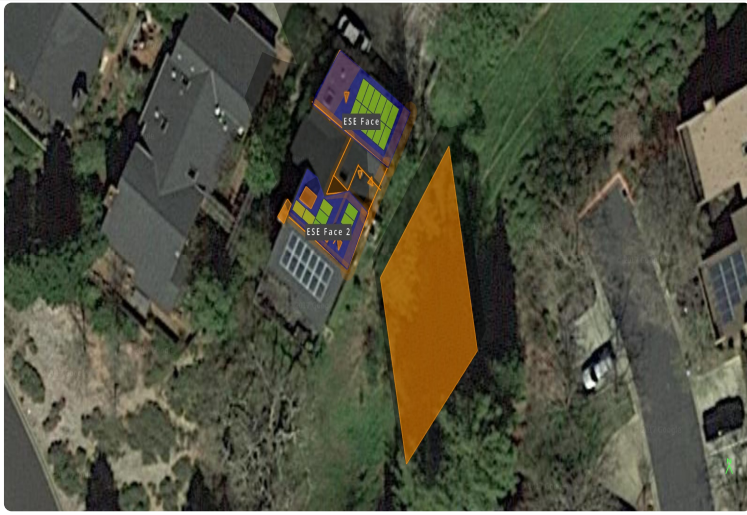
Monthly Production



Sources of System Loss



Southwestern Angle



Southeastern Angle

